



Woody's Turtle Times

Glen Lake School
A Great Place to Start!
603-497-3550

February 20, 2024

Principal's Corner

Hello families!

February is moving quickly! The sun is setting later... Once we come back from February vacation spring will be right around the corner! **February 26th - March 1st** is school vacation week. School will reopen on Monday, March 4th.

Kindergarten registration for the 2024-2025 school year is ongoing. If your child was born between October 1, 2018 and September 30, 2019, your child is eligible to attend kindergarten next year. If you filled out the pre-registration form but haven't completed the rest of registration through our online system, please check your email for further instructions. Registration is not complete until all of that has been done. In order to have your preference of session considered this process must be COMPLETE by March 29, 2024.

Preschool: If you are interested in having your child attend preschool at Glen Lake as a typically developing peer "role model" in the 2024-2025 school year, please contact the school office at (603)497-3550 to request an application packet. Student "role models" in our 3-year-old program attend 3 days per week (Tuesday – Thursday) and 4-year-olds attend 4 days per week (Monday – Thursday). There is no public preschool in Goffstown; these students pay tuition to help defray the cost of their participation in the program. (\$195/month (or \$1950) for 3-year-olds and \$260/month (or \$2600) for 4-year-olds. We often have more requests than we can accommodate, in which case a lottery will be held. If you have concerns about your child's development, please contact us. Applications are due Friday, February 22, 2024.

Enjoy these late winter days with your little one!

All the best,

Kathy Stoye, Principal



GLEN LAKE SCHOOL PARTNERSHIP

We have an official board! Congratulations to the following officers:

President: Kate Russ

Vice President: Jillian Atwood

Secretary: Lauren Ponti

Treasurer: Kathy Memic

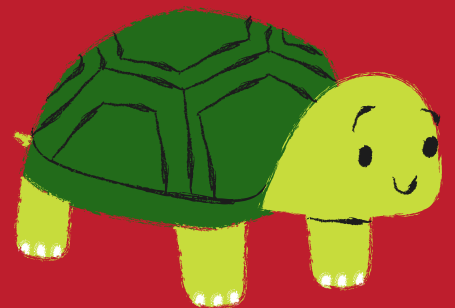
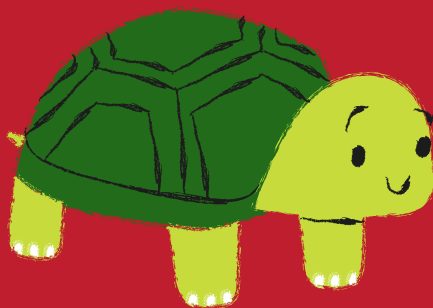
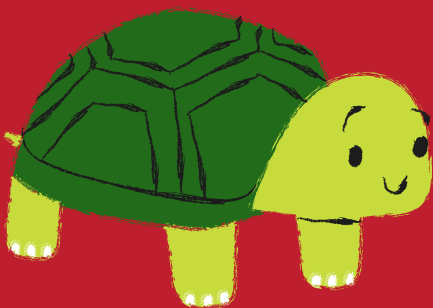


**GLSP
UPDATE**

Thank you to everyone who ordered spirit wear! We love seeing all the kids at school and around town in their Glen Lake gear! It's fun when they match the teachers too!

Please email Kate Russ at kate.l.russ@gmail.com with your questions.

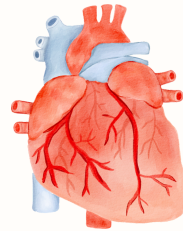
Next Meeting: Wednesday, March 13 at 6:00 PM



Nurse's Corner

Greetings from the health office!

I look forward to teaching the students about their hearts this month. They will be learning about the size of their hearts and how healthy hearts help us to learn. We can take care of our hearts by exercising and eating healthy foods. Make sure to offer a variety of fruits, vegetables, and protein to promote heart health at home.



Reminders:

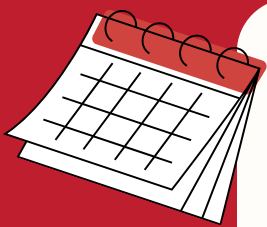
Please keep your child home if they are not feeling well enough to participate in class. They can return to school when:

- Fever free for 24 hours without fever reducing medication
- If they are without vomiting or diarrhea for 24 hours
- If they are well rested, eating, drinking and ready to play with their peers

Please call with any questions or if they will be absent from school!

Be well,

Mrs. Winkfield, Glen Lake School Nurse



Upcoming Events

February

February 26-March 1 - Winter Break (no school)

March

Sunday 3/12: Daylight Savings! "Spring Forward!"

Tuesday 3/12: Town Voting Day / Teacher Workshop Day (no school for students)



Snow much



at Glen Lake School!





REGISTRATION IS NOW OPEN FOR OUR 2024 SPRING SEASON!

Tee Ball ages 4-6 \$125 per player

Farm (coach and player pitch) ages 6-8 \$125 per player

Minors ages 8-10 \$160 per player

Majors ages 10-12 \$160 per player

Intermediate age 13 \$170 per player

Juniors age 14 \$170 per player

Seniors ages 14-16 \$170 per player

Challenger (adaptive league) ages 4 and up- no age limit \$50 per player

Go to www.GoffstownJrBaseball.com to register!

2024 T-Mobile Call Up Grant to cover registration fees available for a limited time.

www.littleleague.org/call-up-grant-program

Player pitch at any level - registration deadline is 2-29-24.

Player pitch evaluation date will be at MVMS on Sunday AM 3-3-24.

All other divisions close end of March.

Late registrations could be subject to unavailability or a late fee.

Please email GJBBoard@GoffstownJrBaseball.com with any questions.

See you on the field!



Our primary goal is for kids to have fun learning to play baseball, while also teaching the fundamentals of life, fair play, and good sportsmanship.

GLS Helmet Sale With ProRider

Certified CPSC approved bike and BMX/skate style helmets



Order by March 11th, 2024

Why a helmet sale?

01

Think spring! ProRider offers affordable helmets for all ages. We will take student orders and Mrs. Winkfield will deliver the helmets here at school. Take advantage of the prices and make sure to order before spring arrives!

How to order

02

Order forms will go home in your child's folder. Please choose a helmet style, size and color and then write a check to GLSP.

Why do you need a helmet?

03

A helmet decreases the risk of a head injury by 85% and the risk of a brain injury by almost 90%. Second, it is also the law!

Just riding in the neighborhood?

04

You and your child should still be wearing a helmet! Nearly half of the most serious injuries happen when riding in your own neighborhood. 75% of bicycle related fatalities can be prevented with a helmet.

What is the best helmet?

05

One that is worn and one that fits best! Please see the fit guide for helmet ordering.

Questions?

06

Call Mrs. Winkfield at 603-660-5952
E-mail: olivia.winkfield@sau19.org

Children-N-Safety Program 1-800-642-3123

A Division of ProRider, Inc.

Information & Pricing



True Toddler
Bike Helmet

\$10.95 ea

CPSC Approved

Model: BM-5

For Ages 1 to 3 yrs

Colors: Blue, Green, Purple and Red

14 Vent Turn Style

\$15.95

Model: BG-TS14

CPSC Approved



Sizes: XS, S/M, L/XL

Colors: Black, Blue, Green, Red

Economy Bike Helmet



Model
BG-8 & BG-10
CPSC Approved

\$9.95

3 Sizes: XS, S/M, L/XL

Colors: Blue, Green and Red

Freestyle Jump Helmet **\$15.95 ea.**

CPSC Approved

*BMX
*Bicycling

*In-Line Skating
*Skate Boarding

Plus Shipping



Colors: Black, Blue, Red

Sizes: XS, S/M, L/XL

SIZE CHART

Approximate ages per size

XXS: 1 to 3 yrs, XS: 3 to 6 yrs, S/M: 6 to 11 yrs,
L/XL: 11 through most Adults

Bike Helmet with Black Foam

12 Vents for cooling

CPSC Approved

\$10.95



Sizes: XS, S/M, L/XL

Colors: Black, Blue
Green, Purple, Red

BM5, BG-8, BG-10,
& JG JUMP

XXS: 18 1/2" - 19 1/4"

XS: 20" - 21 1/4"

S/M: 21 1/2" - 22 1/2"

L/XL: 22 3/4" - 24 1/2"

14 VENT TURN
STYLE BG-TS14

S/M: 22 1/2" - 23 5/8"

L/XL: 23 5/8" - 25 3/4"

GLEN LAKE SCHOOL HELMET ORDER FORM

CNS Children-N-Safety Program A division of ProRider

STUDENT NAME _____

TEACHER _____

PARENT NAME _____

PHONE # _____

EMAIL ADDRESS _____

NOTES

Choose your helmet type and size
 Add \$2 for shipping for each helmet at the end
 Write a check to GLSP
 Return the order form and check by **Monday March 11th**

True Toddler Helmet BM-5

Blue	Green	Purple	Red

Total Qty: _____ X \$10.95 = _____

Bike Helmets w/White Foam
BG-8 & BG-10

Color	XS	S/M	L/XL
Blue			
Green			
Red			
Total			

Total Qty: _____ X \$9.95 = _____

12 Vent Black Foam Bike Bike Hel-
met BM-B/10 & BM-12

Color	XS	S/M	L/XL
Black			
Blue			
Green		N/A	
Purple			
Red			N/A
Total			

Total _____ X \$10.95 = _____

BMX Jump Helmet JGJump

Color	XS	S/M	L/XL
Black			
Blue	N/A		
Red			
Total			

Total Qty: _____ X \$15.95 = _____

14 Vent Turn Style Bike Helmets
BG-TS14

Color	XS	S/M	L/XL
Black			
Blue			N/A
Green		N/A	
Red			
Total			

Total Qty: _____ X \$15.95 = _____

Subtotal: _____

Shipping
(\$2 per helmet): _____

Total Due: _____

Make Checks payable
to GLSP

Helmets are expected
by early April